

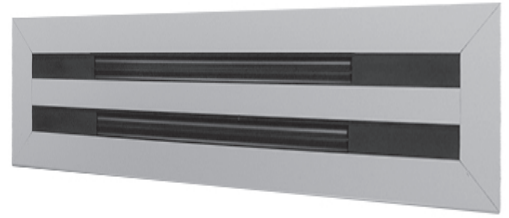
SUBMITTAL SHEET



ALS10 / ALS17

Linear 1" Slot Diffuser

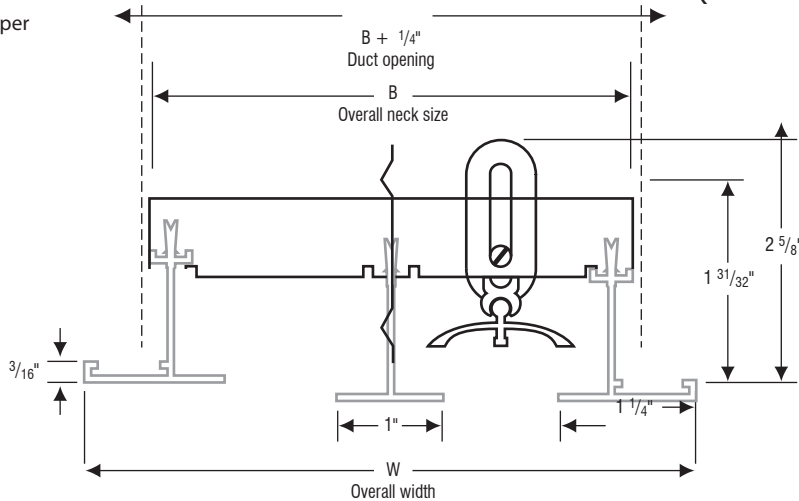
Material: Extruded aluminum construction
Mounting: Surface or Lay-in T-bar ceiling.



ALS10 / ALS17
 (ALS17 two slots shown here)

ALS10
 without pattern-control damper

ALS17
 with pattern-control damper



Frame Gasket -GK

Mounting	
<p>Surface mounting -E</p>	<input type="checkbox"/>
<p>T-bar mounting (N/A with -3) -T</p>	<input type="checkbox"/>

✓	NO. OF SLOTS	B	W
	01	2 3/8"	3 17/32"
	02	4 3/8"	5 17/32"
	03	6 3/8"	7 17/32"
	04	8 3/8"	9 17/32"
	05	10 3/8"	11 17/32"
	06	12 3/8"	13 17/32"
	07	14 3/8"	15 17/32"
	08	16 3/8"	17 17/32"

Fastening Method		
No Fastening -1	Screw -3	Concealed -4
	 N/A with -T	

Finish	
White <input type="checkbox"/>	Custom (please specify) <input type="checkbox"/>

Job: _____

Architect: _____

Engineer: _____

Contractor: _____