

SUBMITTAL SHEET



N° PRM

Rev. 6

Perforated Face Return Diffuser Fixed face

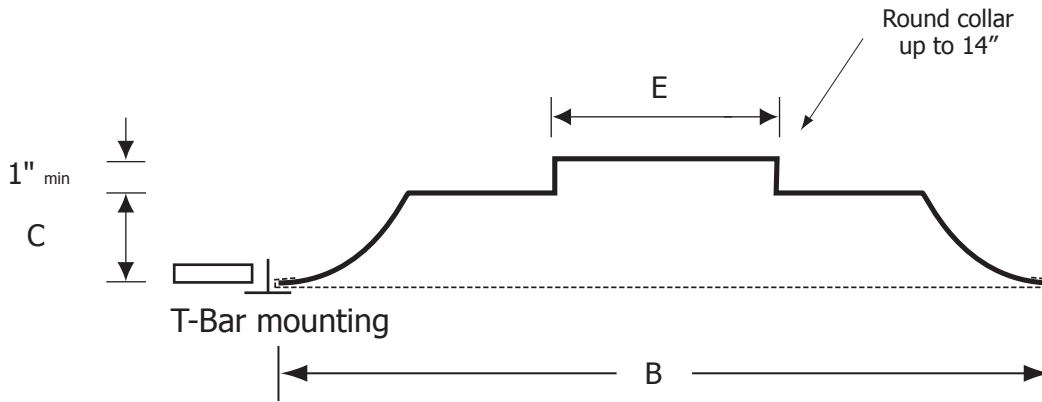
Material: Stamped heavy gauge steel back panel.
Coated steel perforated face with 3/16" diam. round holes on 1/4" staggered centers, affords 53% free area.

Finish: Powder paint coating - white.

Mounting: Lay-in T-bar ceiling.



PRM



Optional fiberglass insulation on back panel, complies with A.S.T.M. E84 flame and smoke test. (Available only on models with 24" x 24" face)

R4

R6

Finish	
<input type="checkbox"/> White	<input type="checkbox"/> Custom <small>(please specify)</small>



✓	Model #	Duct Size	E	Face Dim B x B	C
	PRM 2406	6	5 7/8"	23 7/8" x 23 7/8"	2 7/8"
	PRM 2408	8	7 7/8"	23 7/8" x 23 7/8"	2 7/8"
	PRM 2410	10	9 7/8"	23 7/8" x 23 7/8"	2 7/8"
	PRM 2412	12	11 7/8"	23 7/8" x 23 7/8"	2 7/8"
	PRM 2414	14	13 7/8"	23 7/8" x 23 7/8"	2 7/8"

All dimensions in inches

Project:	_____
Architect:	_____
Engineer:	_____
Contractor:	_____