

SUBMITTAL SHEET



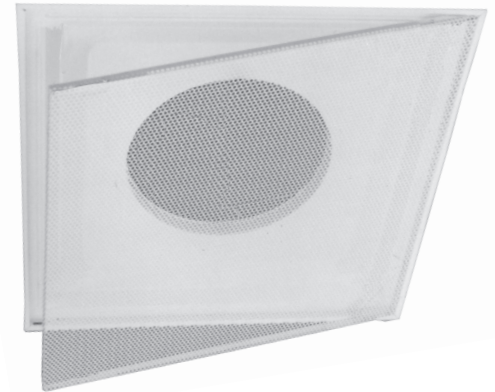
N° PRMF

Perforated Face Filter Return with Steel Back Panel Hinged face

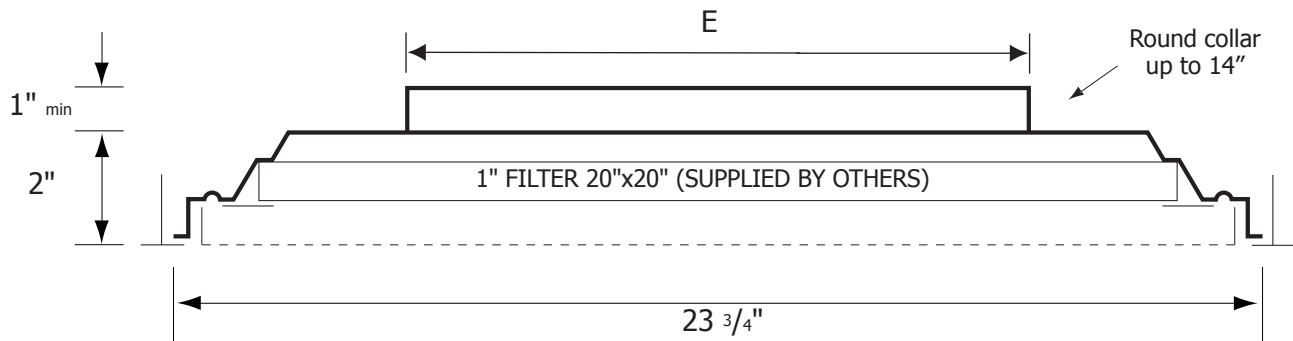
Material: Stamped heavy gauge steel back panel with reinforcing corners. Steel perforated face with 3/16" diam. holes on 1/4" staggered centers, affords 53% free area and swings in and out of fixed frame for access to 20"x20" filter by others.

Finish: Powder paint coating - white.

Mounting: T-bar Lay-in ceiling.



PRMF



✓	Model #	Duct Size	E	Face Dim
	PRMF 2406	6	5 7/8"	23 3/4" x 23 3/4"
	PRMF 2408	8	7 7/8"	23 3/4" x 23 3/4"
	PRMF 2410	10	9 7/8"	23 3/4" x 23 3/4"
	PRMF 2412	12	11 7/8"	23 3/4" x 23 3/4"
	PRMF 2414	14	13 7/8"	23 3/4" x 23 3/4"

Job: _____

Architect: _____

Engineer: _____

Contractor: _____