

## Perforated Face Supply Diffuser Fixed face - baffle deflector

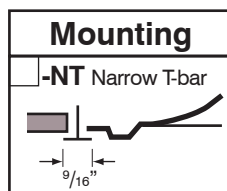
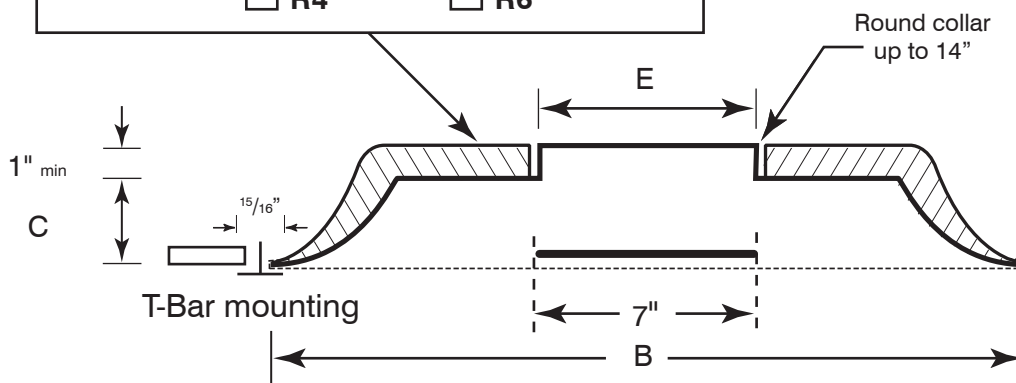
- Material:** Stamped heavy gauge steel back panel.  
Coated steel perforated face with 3/16" diam. round holes on 1/4" staggered centers, affords 53% free area.
- Finish:** Powder paint coating - white.
- Air pattern:** Fixed horizontal 360° diffusion.
- Mounting:** Lay-in T-bar ceiling .



PSM

Optional fiberglass insulation on back panel, complies with A.S.T.M. E84 flame and smoke test. (Available only on models with 24" x 24" face)

R4       R6



**Finish**

/W White (Default)       /C Custom (Please Specify)



| ✓ | Model #  | Duct Size | E       | Face Dim B x B    | C      |
|---|----------|-----------|---------|-------------------|--------|
|   | PSM 2406 | 6         | 5 7/8"  | 23 7/8" x 23 7/8" | 2 7/8" |
|   | PSM 2408 | 8         | 7 7/8"  | 23 7/8" x 23 7/8" | 2 7/8" |
|   | PSM 2410 | 10        | 9 7/8"  | 23 7/8" x 23 7/8" | 2 7/8" |
|   | PSM 2412 | 12        | 11 7/8" | 23 7/8" x 23 7/8" | 2 7/8" |
|   | PSM 2414 | 14        | 13 7/8" | 23 7/8" x 23 7/8" | 2 7/8" |

Schedule type: \_\_\_\_\_

Job: \_\_\_\_\_

Architect: \_\_\_\_\_

Engineer: \_\_\_\_\_

Contractor: \_\_\_\_\_