

Square Plaque Diffuser - Architectural Line



- Material:** Stamped heavy gauge steel.
Finish: Powder paint coating - white.
Mounting: Surface or Lay-in T-bar ceiling.
Air Pattern: Fixed horizontal 360° diffusion.
Core Removal: Unlock hanger brackets by swiveling lever down. Holding core panel at opposite sides, push upwards, then turn clockwise and drop core free from back plenum.

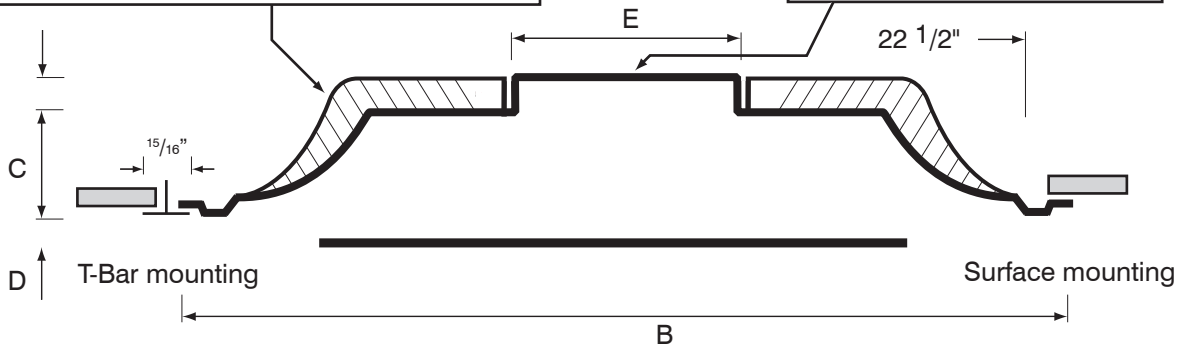
Optional fiberglass insulation on back panel, complies with A.S.T.M. E84 flame and smoke test. (Available only on models with 24" x 24" face)

R4 R6

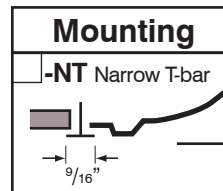
ISO

Round collar up to 14". Standard height is 1".

2" collar



✓	Model #	Duct Size	E	Face Dim B x B	C	D
	ISO 1206	6	5 7/8"	11 3/4" x 11 3/4"	1 3/4"	7/16"
	ISO 1208	8	7 7/8"	11 3/4" x 11 3/4"	1 3/4"	7/16"
	ISO 2406	6	5 7/8"	23 3/4" x 23 3/4"	2 7/8"	7/8"
	ISO 2408	8	7 7/8"	23 3/4" x 23 3/4"	2 7/8"	7/8"
	ISO 2410	10	9 7/8"	23 3/4" x 23 3/4"	2 7/8"	7/8"
	ISO 2412	12	11 7/8"	23 3/4" x 23 3/4"	2 7/8"	7/8"
	ISO 2414	14	13 7/8"	23 3/4" x 23 3/4"	2 7/8"	7/8"



Finish

/W White (Default) /C Custom (Please Specify)



Panel Option for T-bar lay-in Ceiling

No fastening options available

	Steel (WxH)	Aluminum (WxH)
<input type="checkbox"/>	-X2412	<input type="checkbox"/> -Y2412
<input type="checkbox"/>	-X2424	<input type="checkbox"/> -Y2424
<input type="checkbox"/>	-X2448	<input type="checkbox"/> -Y2448
<input type="checkbox"/>	-X4824	<input type="checkbox"/> -Y4824
<input type="checkbox"/>	-X2020	<input type="checkbox"/> -Y2020

Schedule type: _____

Job: _____

Architect: _____

Engineer: _____

Contractor: _____