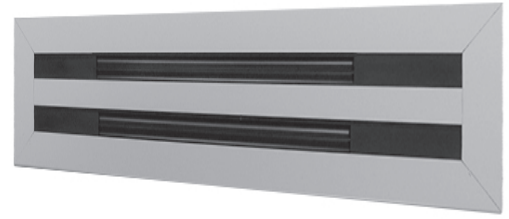


### Linear 1/2" Slot Diffuser

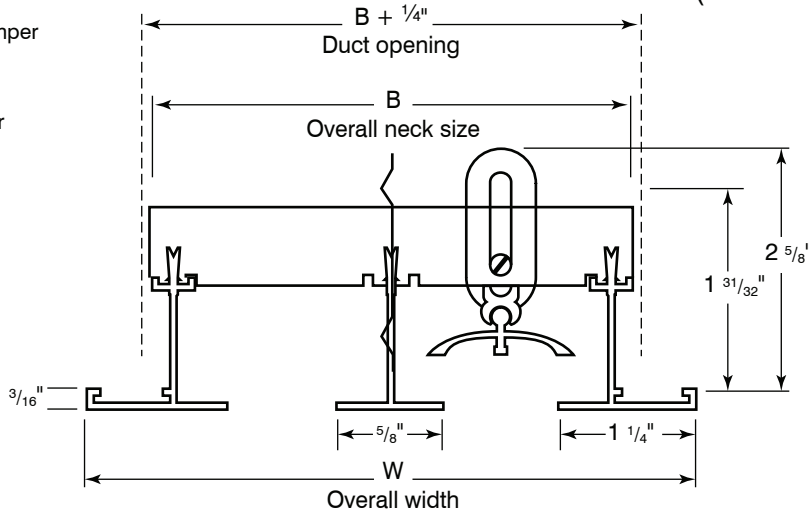
**Material:** Extruded aluminum construction  
**Mounting:** Surface or Lay-in T-bar ceiling.  
 Plaster-in Frame (Tape & Spackle)



**ALS20 / ALS27**  
 (ALS27 two slots shown here)

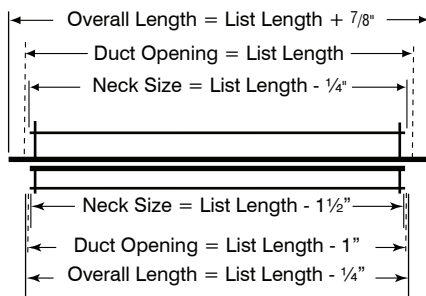
☐ **ALS20**  
 without pattern-control damper

☐ **ALS27**  
 with pattern-control damper



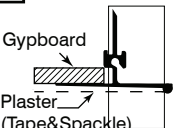
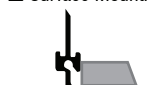

☐ **-GK Frame Gasket**

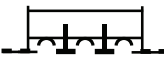
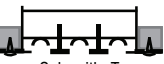
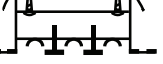
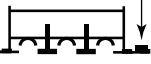
Surface mounting (-E and -P options)



T-Bar mounting (-T option, N/A with -3)

✓	NO. OF SLOTS	For -E and -T mounting type		For -P mounting type	
		B	W	B	W
	01	1 9/16"	2 11/16"	1 7/8"	3"
	02	2 3/4"	3 7/8"	3"	4 1/8"
	03	3 15/16"	5 1/16"	4 1/8"	5 1/4"
	04	5 1/8"	6 1/4"	5 1/4"	6 3/8"
	05	6 5/16"	7 7/16"	6 3/8"	7 1/2"
	06	7 1/2"	8 5/8"	7 3/4"	8 5/8"
	07	8 11/16"	9 13/16"	8 11/16"	9 13/16"
	08	9 7/8"	11"	9 7/8"	11"

Mounting		
<input type="checkbox"/> <b>-P</b> Plaster-In Frame 	<input type="checkbox"/> <b>-E</b> Surface Mounting 	<input type="checkbox"/> <b>-T</b> T-Bar mounting 

Fastening Method			
<input type="checkbox"/> <b>-1</b> No Fastening 	<input type="checkbox"/> <b>-3</b> Screw  Only with -T	<input type="checkbox"/> <b>-4</b> Concealed 	<input type="checkbox"/> <b>-6</b> Adhesive tape 

Finish	
<input type="checkbox"/> <b>/W</b> White (Default)	<input type="checkbox"/> <b>/C</b> Custom (Please Specify)



Schedule type: \_\_\_\_\_

Job: \_\_\_\_\_

Architect: \_\_\_\_\_

Engineer: \_\_\_\_\_

Contractor: \_\_\_\_\_