

Linear 3/4" Slot Diffuser

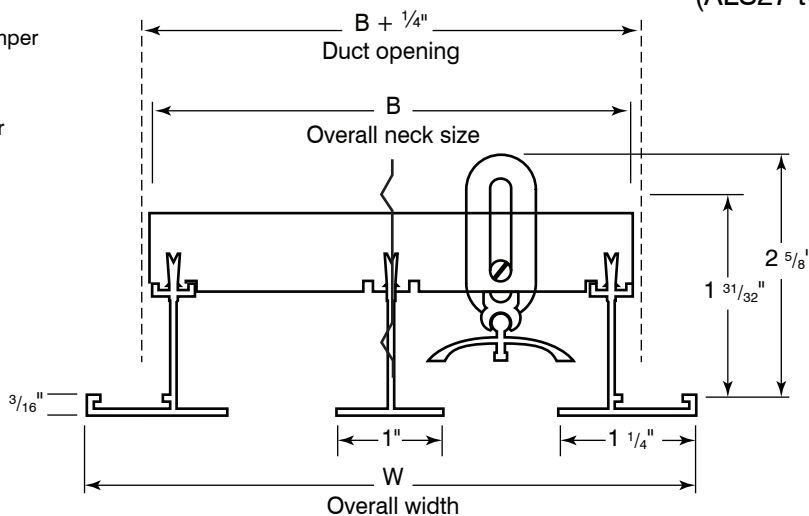
Material: Extruded aluminum construction
Mounting: Surface or Lay-in T-bar ceiling.
 Plaster-in Frame (Tape & Spackle)



ALS30 / ALS37
 (ALS27 two slots shown here)

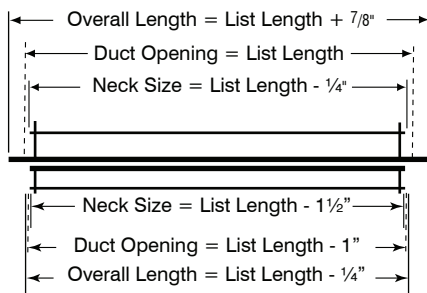
☐ **ALS30**
 without pattern-control damper

☐ **ALS37**
 with pattern-control damper



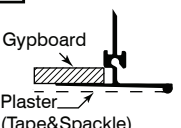
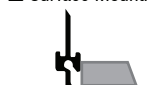

☐ **-GK Frame Gasket**

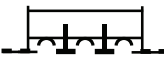
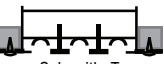
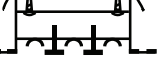
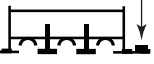
Surface mounting (-E and -P options)



T-Bar mounting (-T option, N/A with -3)

✓	NO. OF SLOTS	For -E and -T mounting type		For -P mounting type	
		B	W	B	W
	01	1 13/16"	2 15/16"	2 1/4"	3"
	02	3 1/4"	4 3/8"	3 11/16"	4 7/16"
	03	4 11/16"	5 13/16"	5 1/8"	5 7/8"
	04	6 1/8"	7 1/4"	6 9/16"	7 5/16"
	05	7 9/16"	8 11/16"	9"	8 3/4"
	06	9"	10 1/8"	9 7/16"	10 3/16"
	07	10 7/16"	11 9/16"	10 7/8"	11 5/8"
	08	11 7/8"	13"	12 5/16"	13 1/16"

Mounting		
<input type="checkbox"/> -P Plaster-In Frame 	<input type="checkbox"/> -E Surface Mounting 	<input type="checkbox"/> -T T-Bar mounting 

Fastening Method			
<input type="checkbox"/> -1 No Fastening 	<input type="checkbox"/> -3 Screw  Only with -T	<input type="checkbox"/> -4 Concealed 	<input type="checkbox"/> -6 Adhesive tape 

Finish	
<input type="checkbox"/> /W White (Default)	<input type="checkbox"/> /C Custom (Please Specify)



Schedule type: _____

Job: _____

Architect: _____

Engineer: _____

Contractor: _____