

Linear 1 1/4" Slot Diffuser

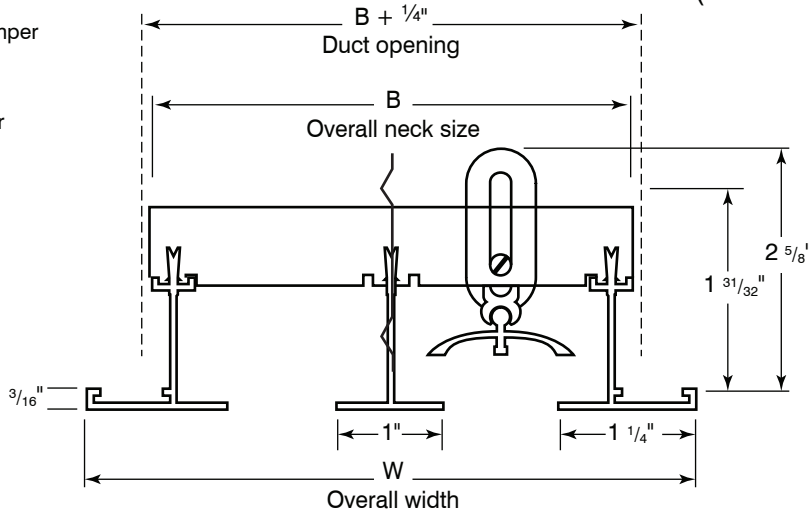
Material: Extruded aluminum construction
Mounting: Surface or Lay-in T-bar ceiling.
 Plaster-in Frame (Tape & Spackle)



ALS40 / ALS47
 (ALS27 two slots shown here)

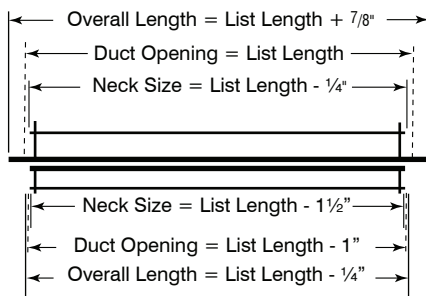
☐ **ALS40**
 without pattern-control damper

☐ **ALS47**
 with pattern-control damper



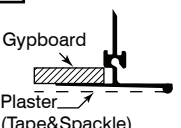
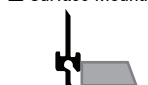

☐ **-GK Frame Gasket**

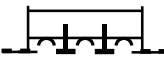
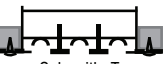
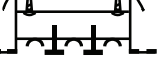
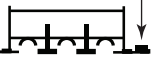
Surface mounting (-E and -P options)



T-Bar mounting (-T option, N/A with -3)

✓	NO. OF SLOTS	For -E and -T mounting type		For -P mounting type	
		B	W	B	W
	01	2 5/8"	3 3/4"	3 1/16"	3 13/16"
	02	4 7/8"	6"	5 5/16"	6 1/16"
	03	7 1/8"	8 1/4"	7 9/16"	8 5/16"
	04	9 3/8"	10 1/2"	9 13/16"	10 9/16"
	05	11 5/8"	12 3/4"	12 1/16"	12 13/16"
	06	13 7/8"	15"	14 5/16"	15 1/16"
	07	16 1/8"	17 1/4"	16 9/16"	17 5/16"
	08	18 3/8"	19 1/2"	18 13/16"	19 9/16"

Mounting		
<input type="checkbox"/> -P Plaster-In Frame 	<input type="checkbox"/> -E Surface Mounting 	<input type="checkbox"/> -T T-Bar mounting 

Fastening Method			
<input type="checkbox"/> -1 No Fastening 	<input type="checkbox"/> -3 Screw  Only with -T	<input type="checkbox"/> -4 Concealed 	<input type="checkbox"/> -6 Adhesive tape 

Finish	
<input type="checkbox"/> /W White (Default)	<input type="checkbox"/> /C Custom (Please Specify)



Schedule type: _____

Job: _____

Architect: _____

Engineer: _____

Contractor: _____