

Linear 1½" Slot Diffuser

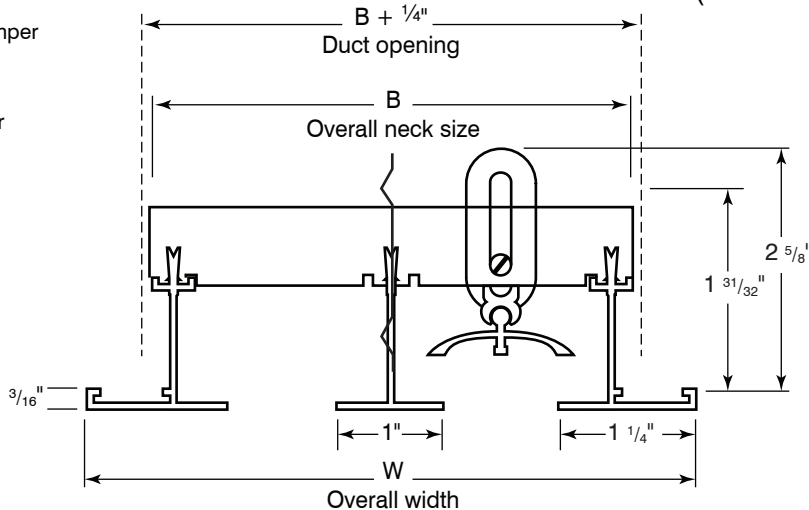
Material: Extruded aluminum construction
Mounting: Surface or Lay-in T-bar ceiling.
 Plaster-in Frame (Tape & Spackle)



ALS50 / ALS57
 (ALS27 two slots shown here)

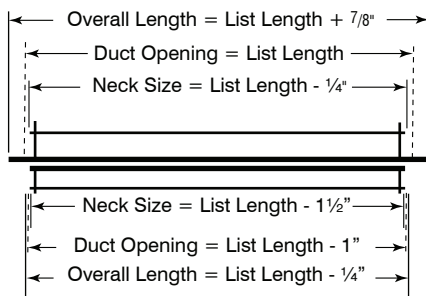
☐ **ALS50**
 without pattern-control damper

☐ **ALS57**
 with pattern-control damper



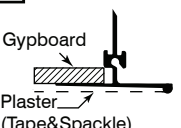
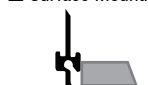

☐ **-GK Frame Gasket**

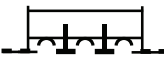
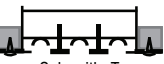
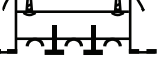
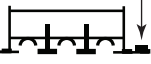
Surface mounting (-E and -P options)



T-Bar mounting (-T option, N/A with -3)

✓	NO. OF SLOTS	For -E and -T mounting type		For -P mounting type	
		B	W	B	W
	01	2 7/8"	4"	3 5/16"	4 1/16"
	02	5 3/8"	6 1/2"	5 13/16"	6 9/16"
	03	7 7/8"	9"	8 5/16"	9 1/16"
	04	10 3/8"	11 1/2"	10 13/16"	11 9/16"
	05	12 7/8"	14"	13 5/16"	14 1/16"
	06	15 3/8"	16 1/2"	15 13/16"	16 9/16"
	07	17 7/8"	19"	18 5/16"	19 1/16"
	08	20 3/8"	21 1/2"	20 13/16"	21 9/16"

Mounting		
<input type="checkbox"/> -P Plaster-In Frame 	<input type="checkbox"/> -E Surface Mounting 	<input type="checkbox"/> -T T-Bar mounting 

Fastening Method			
<input type="checkbox"/> -1 No Fastening 	<input type="checkbox"/> -3 Screw  Only with -T	<input type="checkbox"/> -4 Concealed 	<input type="checkbox"/> -6 Adhesive tape 

Finish	
<input type="checkbox"/> /W White (Default)	<input type="checkbox"/> /C Custom (Please Specify)



Schedule type: _____

Job: _____

Architect: _____

Engineer: _____

Contractor: _____