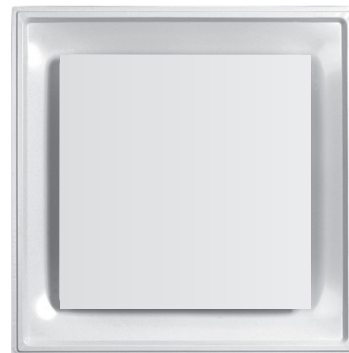


Square Plaque Diffuser - Architectural Line 2" High Collar, Individual Packaging

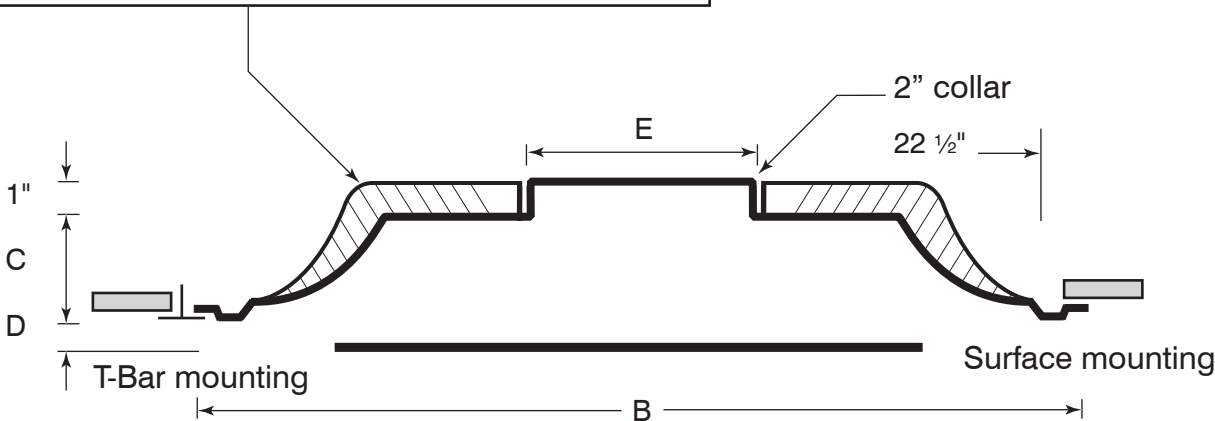
- Material:** Stamped heavy gauge steel.
- Finish:** Powder paint coating - white.
- Mounting:** Surface or Lay-in T-bar ceiling.
- Air Pattern:** Fixed horizontal 360° diffusion.
- Safety:** Seismic tabs.
- Core Removal:** Unlock hanger brackets by swiveling lever down. Holding core panel at opposite sides, push upwards, then turn clockwise and drop core free from back plenum.



ISOD

Optional R6 fiberglass insulation on back panel complies with A.S.T.M. E84 flame and smoke test. (Available only on models with 24" x 24" face)

-R4 -R6



Mounting

-NT Narrow T-bar

9/16"

✓	Model #	Duct Size	E	Face Dim B x B	C	D
	ISOD 2406	6	5 7/8"	23 3/4" x 23 3/4"	2 7/8"	7/8"
	ISOD 2408	8	7 7/8"	23 3/4" x 23 3/4"	2 7/8"	7/8"
	ISOD 2410	10	9 7/8"	23 3/4" x 23 3/4"	2 7/8"	7/8"
	ISOD 2412	12	11 7/8"	23 3/4" x 23 3/4"	2 7/8"	7/8"

Finish

/W White (Default) /C Custom (Please Specify)



Schedule type: _____

Job: _____

Architect: _____

Engineer: _____

Contractor: _____